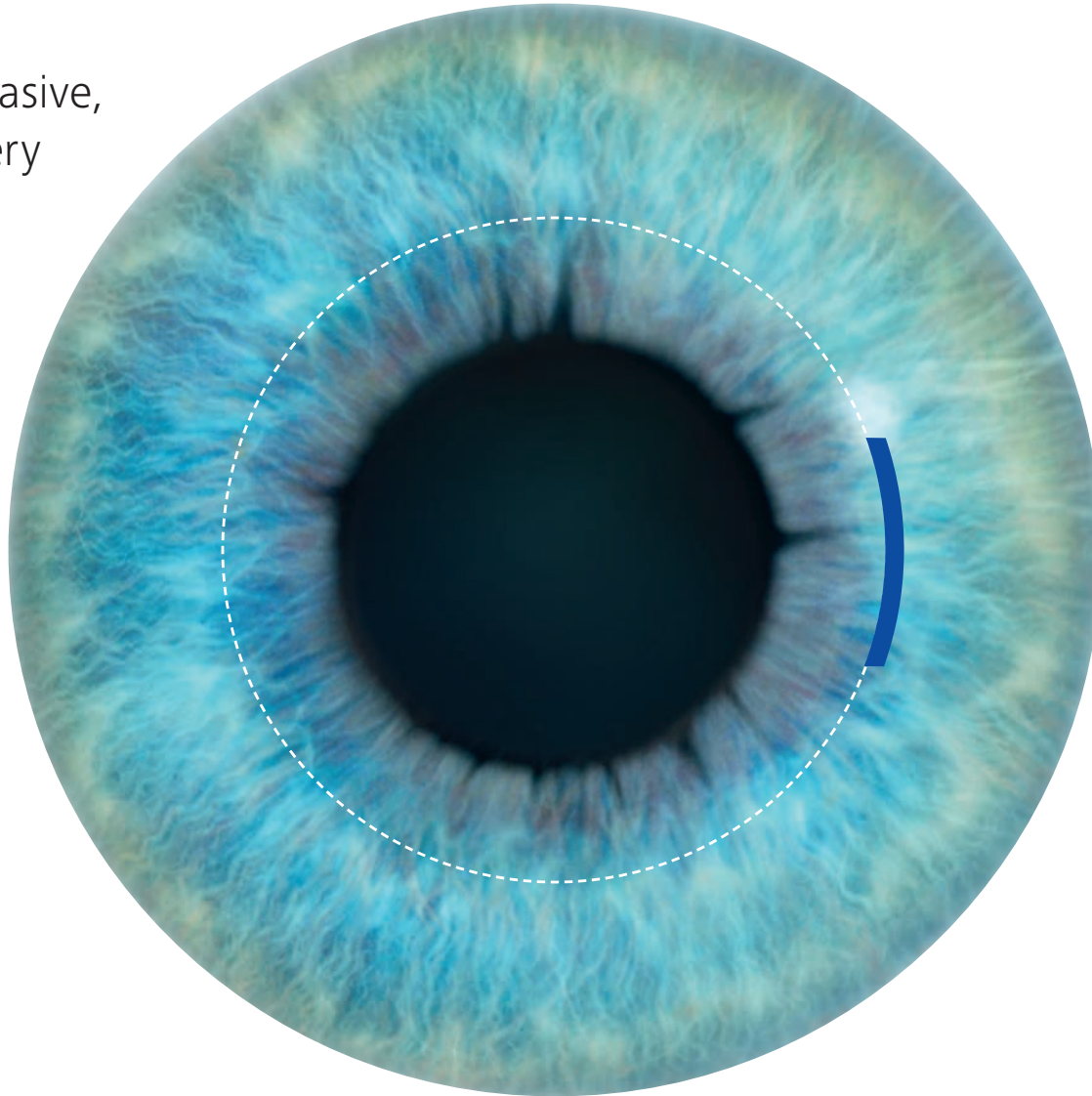


## 3<sup>rd</sup> Generation Laser Vision Correction

### **SMILE**

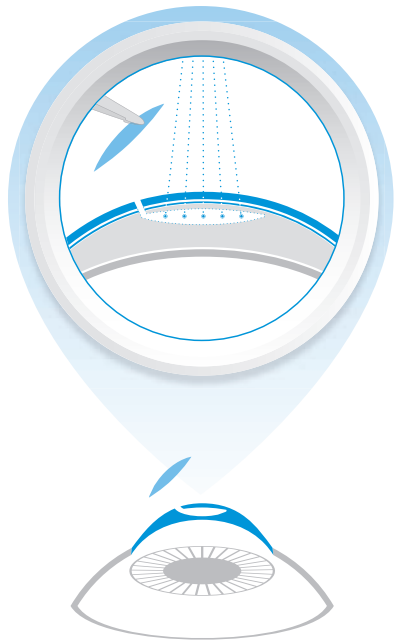
Minimally invasive,  
flapless surgery



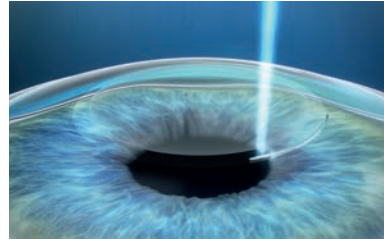
# SMILE

## Minimally invasive, flapless surgery

Small incision lenticule extraction, or SMILE for short, is firmly established as the 3<sup>rd</sup> generation of laser vision correction beyond PRK and LASIK. It is a minimally invasive, flapless procedure that combines the advantages of the two previous generations. Requiring no flap, the outer corneal layer remains largely intact. There is less incidence of dry eye and other postsurgical effects. The overall treatment is gentle and visual recovery normally fast.



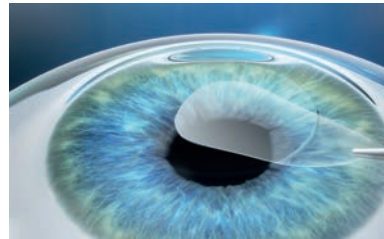
## The treatment steps



### Step 1

#### Creating the lenticule

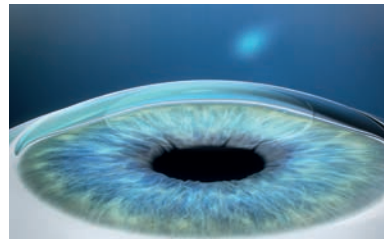
A small piece of corneal tissue (lenticule) and a small incision are created inside the intact cornea.



### Step 2

#### Removing the lenticule

The lenticule is removed through the small incision with minimal disruption to the cornea.



### Step 3

#### Correcting the error

Removing the lenticule changes the shape of the cornea, correcting the refractive error.